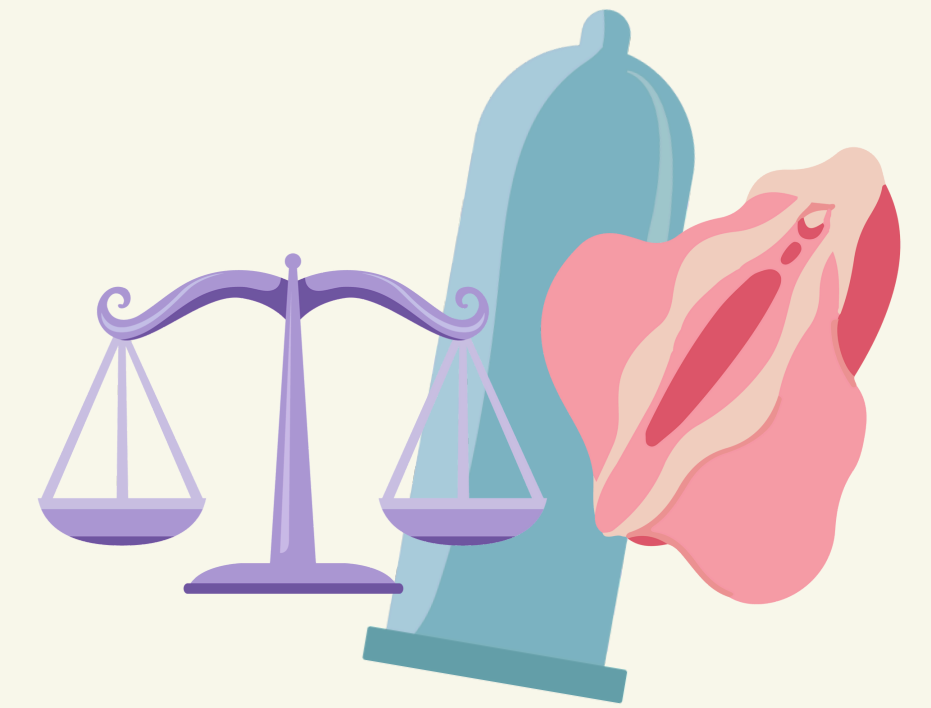


# STRATEGIC PLAN

## 2026 – 2030



OPTIMAL SEXUAL AND REPRODUCTIVE HEALTH AND RIGHTS FOR EVERYONE, EVERYWHERE.

**HOW?** We are the national peak body driving action on sexual and reproductive health, education, rights & wellbeing.

### WE DO THIS BY:

- ➔ Being a national Centre of Excellence in training, education and service delivery
- ➔ Advocating and facilitating national focus in Sexual and Reproductive Health (SRH) policy and integrated system change
- ➔ Connecting, building and sharing knowledge for clinical excellence, education, and health promotion
- ➔ Centring lived experience, elevating the voice of priority populations including young people, disabled people, LGBTIQ+, First Nations and Culturally and Linguistically Diverse people in SRH in Australia
- ➔ Having a strong primary member network and associate membership

# STRATEGIC PILLARS

1

## EXPERT ADVICE AND POLICY LEADERSHIP

**SRHA leverage our combined expertise to advocate for integrated SRH systems and policy through:**

- Being thought leaders in SRH
- Reducing stigma, discrimination, racism and inequity
- Health promotion and preventative care
- Strengthening and supporting data, evidence and research
- National expert advisory groups
- Submissions to government

2

## LEADING COLLABORATION AND PARTNERSHIPS

**SRHA bring communities and the sector together through national leadership with:**

- National representatives in each state and territory as primary members
- Associate members across the SRH sector
- International membership via the International Planned Parenthood Federation (IPPF) as the official Associate Member representing Australia.
- Effective consultation, and information sharing with our members, the wider sexual and reproductive health and rights sector, the community and federal and jurisdictional governments and policy makers.
- Collaborative national projects utilising well established and extensive SHRA network

3

## CAPACITY BUILDING, QUALITY AND SAFETY

**SRHA strengthen the capability and capacity of the SRH workforce and community through:**

- Integrated and comprehensive sexual and reproductive healthcare models
- Consistency and excellence in clinical service delivery across Australia
- Nationally recognised and accredited training and education delivery
- Leadership in Comprehensive Sexuality Education (CSE)
- Championing top of scope for all health practitioners
- SRH sector networking and support
- Primary preventative health and education (STI, unintended pregnancy), early intervention for multiple domains including, CSE, Gender-based violence
- Inclusive, contemporary and intersectional education, information and models of care

4

## SUSTAINABILITY

**SRHA's strong membership and history in SRH in Australia contributes to sustainability and governance through:**

- Connection to communities and history through primary members who have delivered services and activities in each jurisdiction of Australia over decades to enhance outcomes and improve access for those with the most need and least choice.
- Governance mechanisms with representation in each state and territory of Australia
- Diversity of activities and funding, driving opportunities to create and sustain diverse activities and funding streams to enhance reach and impact.

